

# HUXLEY SUMMIT

TRUST IN THE 21ST CENTURY

Programme

8 November 2016  
BAFTA, London

# Contents

Agenda	page 3
Chapters	page 4
Trust in the 21st Century	page 6
Why trust matters	page 8
Speakers	page 12
Partners	page 18
Attendees	page 19

A film crew and photographer will be present at the Huxley Summit. If you do not wish to be filmed or photographed, please speak to a member of the team at British Science Association.

We encourage attendees to use Twitter during the Summit, and we recommend you use the hashtag #HuxleySummit to follow the conversations.

# Agenda

08:30	Registration
09:00	<b>Chapter 1: State of the nation</b>
10:30	Coffee and networking
11:10	<b>Chapter 2: Who do we trust?</b>
12:20	Lunch and networking
	<ul style="list-style-type: none"> <li>➤ Round table on corporate sponsored research</li> <li>➤ Round table on reasons for failure</li> </ul>
13:50	<b>Chapter 3: Who will we trust?</b>
15:20	Coffee and networking
16:00	<b>Chapter 4: Who should we trust?</b>
17:45	Closing remarks
18:00	Drinks reception



## Chapter 1: State of the nation

The global events of 2016 have caused many people to question who they trust. How is this affecting the role of experts and institutions? How can leaders from across politics, business, science and the arts create a flourishing, creative and innovative society, workforce and economy against this backdrop?

### Speakers:

- › **Lord David Willetts**, Chair of the British Science Association
- › **Professor Alice Roberts**, Anatomist and Broadcaster
- › **Sacha Romanovitch**, Chief Executive of Grant Thornton LLP UK
- › **Baroness Onora O'Neill**, Professor of Philosophy at the University of Cambridge

## Chapter 2: Who do we trust?

Many sections of business, politics and public life have had a crisis of public trust in recent years, but who do we trust with science? And what can we learn from the handling of different areas of science and innovation?

### Speakers:

- › **Lady Barbara Judge**, Chair of the Institute of Directors
- › **Sir David Spiegelhalter**, Winton Professor for the Public Understanding of Risk at the University of Cambridge
- › **Julia King, Baroness Brown of Cambridge DBE**, Crossbench member of the House of Lords
- › **Dr Julia Shaw**, Lecturer in Criminology and Psychology at London South Bank University

### Lunchtime round tables

- › **Corporate sponsored research**  
**Speaker:** Professor Gillian Leng, Deputy Chief Executive, NICE
- › **Reasons for failure**  
**Speaker:** Professor Joyce Tait, Director of Innogen Centre, University of Edinburgh

## Chapter 3: Who will we trust?

The public need to be engaged and informed on innovations in science and technology that are set to have a big impact on their lives and the world around them. With technological progress comes a greater need for accountability, for creating public discussion and for ensuring a shared vision between power and the people. What experts, institutions and systems are we going to trust in the future?

### Speakers:

- › **Baroness Martha Lane-Fox**, Founder of lastminute.com and Chair of Doteveryone.org.uk
- › **Vinay Gupta**, Technologist and Policy Analyst
- › **Dame Wendy Hall**, Professor of Computer Science at the University of Southampton
- › **Sir Nigel Shadbolt**, Professor of Artificial Intelligence at the University of Oxford
- › **Richard Wiseman**, Professor of Public Understanding of Psychology at the University of Hertfordshire

## Chapter 4: Who should we trust?

Trust and good reputations are hard won but easily lost. What drives consumers' decision making and how can we drive trust in our businesses and institutions? How can leaders from across politics, business, science and the arts regain the trust of society? How can collaboration and innovation drive greater openness, transparency and economic benefits for both the good of society and UK plc?

### Speakers:

- › **Matt Ridley**, Journalist and Author
- › **Daniel Suskind**, Author and Lecturer in Economics at the University of Oxford
- › **Dame Sally Davies**, Chief Medical Officer for England
- › **Karen Blackett OBE**, Chair of MediaCom UK
- › **Edwina Dunn**, Co-founder of Dunnhumby and Chair of the Your Life campaign
- › **Ed Williams**, Chief Executive, Edelman UK

Drinks reception with a performance from comedian Matt Forde



**Rt Hon. the Lord David Willetts**  
Chair of the British Science Association

As Chair of the British Science Association, I am delighted to welcome you to today's event: our inaugural Huxley Summit.

The Summit is named after 'Darwin's bulldog', self-taught scientist Thomas Huxley who argued for Darwin's theory of evolution against the Bishop of Oxford, Samuel Wilberforce, the famous Huxley-Wilberforce debate, which took place at the British Science Association's annual meeting in Oxford in 1860.

This was a pivotal moment in the public's understanding of - and opinion - on evolution, and arguably one of the Association's biggest historical contributions to making science a fundamental part of culture.

Then, evolution was controversial because it was contrary to religious orthodoxy. Darwin and Huxley were outliers, but ultimately the theory of evolution and Darwinian thinking fundamentally changed our society, and how we view the world and our place in it.

Today, the world faces key scientific and social challenges that can only be overcome by different sectors of society, business and industry working together - challenges that cannot be fixed by scientists alone.

The aim of the Huxley Summit is to bring together leaders from both within and beyond science to discuss and debate radical ideas for using science to advance society. This year we are doing that through the lens of trust. We've challenged our speakers to embody the spirit of Huxley by questioning and challenging us all on the issue of trust in experts, in expertise and in institutions.

During my tenure as Universities and Science Minister, I sometimes found myself as the only non-scientist at meetings or events. I like to think of myself as a rational thinker, champion of evidence, and fascinated by how things connect. I am therefore delighted that the Huxley Summit provides a platform to bring together leaders from different sectors - not just science - to discuss the big challenges we face in the 21st century.

The Summit comes at an opportune time, after the EU Referendum and on the day of the US Election, and I hope that we can use today as an opportunity to question, discuss and agree new ways to build trust in science and technology to advance society.



# Why trust matters



**Katherine Mathieson,**  
Chief Executive of the British Science  
Association

Throughout the Brexit debate, one comment stuck in my mind and seemed to resonate with people on both sides of the argument. Responding to expert claims in June that Brexit would damage the UK irreparably, Leave campaigner Michael Gove said the line that sent shivers down the spines of our colleagues in all fields: “People in this country have had enough of experts”.

Now, four months on, we can see the immediate result of the vote to leave the European Union. The markets are volatile, the future is uncertain and many of us are left trying to figure out what has caused the big divide in our country. Disillusionment, austerity and misinformation have all been blamed for the polarised result. So what does this mean for science?

For centuries Britain, has been at the forefront of science and engineering. Science is not just part of our past, a venerable heritage of a bygone era – it is part of our future; the UK’s competitiveness and economy depends on it. But when Mr Gove made this statement, it made me wonder if our relationship with experts and scientists was changing.

Mr Gove’s comments are believable, since trust in many sectors has declined sharply in recent years. The Financial Services Compensation Scheme says<sup>1</sup> that trust in the financial sector was shattered by the recession. Trust in charities has also dipped<sup>2</sup> from a rating of 6.7 to 5.7 since 2014, with people citing reasons such as aggressive fundraising tactics and the collapse of Kids Company as the cause of this dip. Trust in MPs also fell after the expenses scandal according to Ipsos MORI<sup>3</sup>. These events have shaken confidence in the people and institutions we considered to be experts.

Are scientific experts next to undergo a sharp decline in trust? And what could this mean for the UK and our place in the world?

At the British Science Association, we monitor the relationship between science and society, and it’s complicated. On the surface, our trust in scientists is very high – more people trust scientists to tell the truth (79%) than the police (53%) or the clergy (67%), according to Ipsos MORI’s Veracity Index<sup>4</sup>. The Institute for Government also found that most of us want experts to be involved in policy decisions (85%), and for their evidence to be used by politicians (83%)<sup>5</sup>.

Delve a bit deeper and you find that this trust is less robust than it first seems. Our research shows that only 12% of the population actively seek out scientific information, media content or events. Around 52% are open to science but don’t actively seek it out, and 27% completely avoid it<sup>6</sup>. With the majority of our citizens disengaged from science, can the trust they experience for experts be sustained and resilient?

This low level of engagement suggests that our relationship with science and expertise is based largely on blind trust. We allow scientists and scientific institutions to get on with their work, often with public funding, without much questioning or scrutiny. We rely on science to police itself. But who can blame us when science is so inaccessible: each academic article can cost upwards of £40 to read; funding decisions are made behind closed doors; and many scientists are not recognised or rewarded for their engagement with people outside their profession.

This behaviour is described by Anthony Giddens as 'civil inattention'. Many of us have no choice but to trust experts because it is difficult to challenge people who have more specialist knowledge than us. Events such as the MMR controversy, GM food protests, the BSE crisis and Climategate then come as quite a shock to those in the scientific establishment that are not used to being challenged.

From these examples, it's clear that people get involved and question things when they matter to them, or when their trust in others is eroded. On the back of a public outcry over MPs' expenses, charity fundraising and the financial sector, new regulators have been established to push for responsible conduct but it's not yet clear whether the recent drop in trust towards these groups will force them to re-evaluate the way they function. It has taken a crisis in these areas to force good practice.

Back in the world of science, many of our colleagues and partners are concerned that a scandal will destroy the seemingly fragile trust many have for researchers and experts.

At the British Science Association, we think it's time to get ahead of the curve and make some radical changes. We're working to enable people to access, question and scrutinise research.

We think it's a fast track to accelerated innovation, a democratic society and stronger citizenship. We want to see a population that is keen to actively engage as critical friends, with institutions that are open to challenge and scrutiny.

We organised the Huxley Summit to bring non-scientists into the leadership and decision-making structures of science, deliberately blurring the lines that separate science from business, politics, media, and the arts.

We envision a world where everyone is able to learn, use and question the knowledge created by our institutions and contribute their ideas and findings. We want everyone to feel united in the aim of scientific and societal progress. To do this, we need support from all types of organisations and people.

We want to see an opening up of what happens inside science. More accessible communication is a first step towards being fully open and transparent. This means more dialogue between citizens and institutions, and crucially before the big decisions are made. Another step is citizen-led scientific research. After that, could we see new and disruptive forms of transparency that take us away from blinkered trust and toward a sense of shared ownership and accountability?

We want to see a proactive approach to openness, to help rebuild the relationship between people and institutions. These ideas are universally applicable across business, charity and government, and we hope to provide a platform to discuss them today.

We named this Summit after Thomas Henry Huxley, a self-trained biologist who in 1860 gave his ferocious support to Darwin's theory of evolution at the BSA's annual meeting. Crucially, the debate included voices from science alongside those from religion and other areas. Huxley fought for a radical new idea against a powerful establishment, built a network of supporters and pushed for what he believed in. We hope the Summit will provide a platform for leaders of innovation like Huxley was to spark debate and build trust in the 21st century.

- .....
- 1 <http://www.fscs.org.uk/globalassets/press-releases/20151111-fscs-trust-white-paper-final.pdf>  
Accessed 28 October 2016
  - 2 <https://www.gov.uk/government/news/public-trust-in-charities-has-fallen-reports-charity-commission>  
Accessed 28 October 2016
  - 3 [https://www.ipsos-mori.com/Assets/Docs/Polls/June2013\\_Trust\\_Topline.pdf](https://www.ipsos-mori.com/Assets/Docs/Polls/June2013_Trust_Topline.pdf)  
Accessed 28 October 2016
  - 4 <https://www.ipsos-mori.com/researchpublications/researcharchive/15/Trust-in-Professions.aspx?view=wide>  
Accessed 28 October 2016
  - 5 <http://www.instituteforgovernment.org.uk/sites/default/files/publications/4483%20IFG%20-%20Smarter%20Engagement%20v5.pdf>  
Accessed 28 October 2016
  - 6 <http://www.britishecienceassociation.org/news/science-is-not-just-for-scientists>  
Accessed 28 October 2016



**Karen Blackett OBE**

Karen is chair of MediaCom UK and is a renowned business leader with a track record in creating vibrant cultures, energising teams and consistently delivering business growth and success. Named as one of the Debrett's 500 in 2016, Top 40 most influential women in the UK over 40 by The Telegraph's Stella Magazine and recognised by Ad Age, as one of 20 European women to watch, Karen brings a different ingredient to the corporate sphere that helps to create a winning difference in business.



**Dame Sally Davies**

Sally is the Chief Medical Officer for England, and was previously the Chief Scientific Adviser at the Department of Health.

During her time as a clinician, she specialised in the treatment of diseases of the blood and bone marrow where she became an expert in sickle cell disease. Sally was born in Birmingham and studied medicine at Manchester Medical School where she graduated as a doctor. She later gained a Master of Science degree from the University of London.



**Edwina Dunn**

Edwina is the co-founder of Dunnhumby, which uses data mining and analysis to help improve customers' retail and

brand experience. Her company was instrumental in the introduction of the Tesco Clubcard. Edwina is also a director of entertainment social media platform Starcount.

Edwina is also the founder of The Female Lead, the chair of Your Life and director of Purple Seven.



**Matt Forde**

Matt is a comedian, impressionist, comedy writer and radio presenter. He is one of the country's most in-demand satirists,

having appeared on The Royal Variety Performance 2015 (ITV), Have I Got News For You (BBC One), Mock the Week (BBC Two), Rory Bremner's Coalition Report and Election Report (both BBC Two), 8 out of 10 Cats (Channel 4), Question Time (BBC One), This Week (BBC One) and Jon Richardson Grows Up (C4). Earlier this year, he launched Unspun with Matt Forde on DAVE.



**Dame Wendy Hall**

Wendy is Professor of Computer Science at the University of Southampton, and is a Director of the Web Science Institute. She was

one of the first computer scientists to undertake serious research in multimedia and hypermedia, and has been at its forefront ever since. The influence of her work has been significant in many areas including digital libraries, the development of the Semantic Web, and the emerging research discipline of Web Science. She became a Dame Commander of the British Empire in 2009, and was elected a Fellow of the Royal Society in June 2009.



**Vinay Gupta**

Vinay is a technologist and policy analyst with a particular interest in how specific technologies can create or close off

avenues for decision makers. This interest has taken him through cryptography, energy policy, defence, security, resilience and disaster management arenas. Vinay managed the launch of Ethereum and worked as a strategic architect for Consensus Systems before launching a Venture Capital fund in London in 2016.

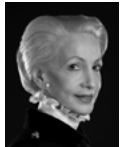


**Nina Hossain**

Nina is the main presenter of the ITV News London and also presents a number of national news bulletins for ITV News. She

also presented the 'Opinion Room' for ITV's Election 2015 coverage, where she was joined by key commentators and analysts. Born in Huddersfield, West Yorkshire, Nina studied English Language and Linguistics at Durham University, before gaining a Post-graduate Diploma in Broadcast Journalism at the University of Central Lancashire, Preston. She has previously presented on The Medical Channel and was the launch face of BBC London News.





#### Lady Barbara Judge CBE

Barbara is currently chair of the Institute of Directors, is a trained commercial lawyer with both British and American citizenship and has had a successful international career as a senior executive, chair and non-executive director in both the private and public sectors. In 2002 she was appointed as a director of the United Kingdom Atomic Energy Authority and became its chair in 2004. She was the Chair of the Pension Protection Fund (2010-2016) and is currently the Deputy Chair of the Tepco Nuclear Reform Committee and Chair of its Task Force on Nuclear Safety.



#### Baroness Martha Lane Fox CBE

Martha is founder and executive chair of Doteveryone.org.uk, and is also a non-executive director of Twitter and a crossbench peer in the House of Lords. She is perhaps best known for co-founding Europe's largest travel and leisure website, lastminute.com with Brent Hoberman, which they took public in 2000 and then sold in 2005. Martha is currently the Chancellor of the Open University and is a non-executive director of the Baileys Women's Prize for Fiction, the Creative Industries Federation, the Scale Up Institute and the Open Data Institute.



#### Baroness Onora O'Neill

Onora is an Emeritus Professor of Philosophy at the University of Cambridge, and a crossbench member of the House of Lords. She is a former President of the British Academy (1988-1989) and chaired the Nuffield Foundation (1998-2010). Until March 2016, she was Chair of the Equality and Human Rights Commission and is a member of the Banking Standards Board and the Medical Research Council. In 2013, she gave a Ted talk on 'what we don't understand about trust' that has been watched by nearly 1.4 million people.



#### Professor Alice Roberts

Alice is an anatomist, anthropologist and Professor of Public Engagement in Science at the University of Birmingham. She is also a broadcaster and has presented several landmark BBC series including The Incredible Human Journey, Origins of Us, Ice Age Giants and The Celts. She has also presented several Horizon programmes, and occasionally presents Costing The Earth on Radio 4. She has written seven popular science and archaeology books. Her book about embryology and evolution, The Incredible Unlikelihood of Being, was shortlisted for the Wellcome Trust Book Prize in 2015.



#### Julia King, Baroness Brown of Cambridge DBE

Julia is an engineer and cross-bench member of the House of Lords. She is the UK's Low Carbon Business Ambassador, a member of the Committee on Climate Change, and was Vice-Chancellor of Aston University from 2006 to 2016. She has previously worked for Rolls-Royce and as Principal of the Engineering Faculty at Imperial College. In 2007-8 she led the King Review for the Government, looking at decarbonising road transport and looking ahead to ultra-low emission cars powered by electricity or hydrogen.



#### Professor Gillian Leng CBE

Gillian is the Deputy Chief Executive at the National Institute for Health and Care Excellence. She is also a visiting professor at King's College London. Her research interests at King's are focussed on the challenges of implementing evidence-based recommendations, particularly in relation to the health of the wider population.



#### Viscount Matt Ridley

Matt's books have sold over a million copies, been translated into 30 languages and won several awards. His TED talk "When Ideas Have Sex" has been viewed more than two million times. He currently writes a weekly column in The Times and writes regularly for the Wall Street Journal. As Viscount Ridley, he was elected to the House of Lords in February 2013. He is a fellow of the Royal Society of Literature and of the Academy of Medical Sciences, and a foreign honorary member of the American Academy of Arts and Sciences. He is honorary president of the International Centre for Life in Newcastle.



#### Sacha Romanovitch

Sacha is the current CEO of Grant Thornton UK LLP. Taking up this role in 2015, she became the first female to be elected as CEO of a major accountancy firm. During her career she has worked with major business units to deliver superior business performance, led on ground breaking cultural change programmes and pioneered approaches to unlock talent and create value for clients. Sacha also sits on the UK National Advisory Board to the Global Social Impact Investment Steering Group and is the current chair of the patron group for Access Accountancy.





#### Sir Nigel Shadbolt

Nigel is Principal of Jesus College, Oxford and a Professorial Research Fellow in the Department of Computer Science, University of Oxford. He studies and writes about open data, artificial intelligence, computer and web science. Nigel is the co-author of *The Spy in the Coffee Machine: The End of Privacy as We Know it* and the Chair and Co-Founder of the Open Data Institute, an organisation that focuses on unlocking supply and stimulate demand for open data. Nigel is an appointed member of the Public Sector Transparency Board, and the Director of the Web Science Trust.



#### Sir David Spiegelhalter OBE

David is a Professor of the Public Understanding of Risk at the University of Cambridge and a statistician who has pioneered the modelling of risk in medical contexts. He has brought statistical methodology into the heart of clinical performance monitoring and has worked extensively to improve general understanding of mathematical uncertainty. He is also a popular and respected communicator of scientific concepts and has written numerous books and newspaper articles explaining the nature of risk, uncertainty and statistics.



#### Professor Joyce Tait CBE

Joyce is a Professor at the University of Edinburgh and a Director of the Innogen Centre. She is a Fellow of the Royal Society of Edinburgh and also of the Society for Risk Analysis. Additionally, Joyce is an appointed member of the Scottish Science Advisory Committee, Scientific and Technical Council of the International Risk Governance Council, the Board of Directors of the Scottish Stem Cell Network, and President of the Society for Risk Analysis.



#### Ed Williams

Ed Williams is Chief Executive of Edelman UK and Ireland, the largest communications consultancy in the UK. He joined the firm in late 2011 from the BBC where he had been Director of Communications since the beginning of 2008 and a member of the BBC's management board. Ed is also listed as one of London's 1,000 Most Influentials by the Evening Standard and was formerly the Deputy Chair of the English National Ballet.



#### Dr Julia Shaw

Julia is a senior lecturer and researcher in the Department of Law and Social Sciences at London South Bank University. Her research focuses primarily on false memories, false confessions, eyewitness issues, investigative interviewing, criminal thinking, psycho-legal misconceptions and is frequently featured in media outlets around the world such as the BBC and CNN world. Julia also consults as an expert on criminal cases, delivers police-training and military workshops, and has evaluated offender diversion programmes.



#### Daniel Susskind

Daniel is a Lecturer in Economics at Balliol College, Oxford, and the co-author of *The Future of the Professions* which explains how "increasingly capable systems", from telepresence to artificial intelligence, will bring fundamental change in the way that the expertise of specialists is made available in society. Previously, he worked for the British Government in the Prime Minister's Strategy Unit, in the Policy Unit in 10 Downing Street, and as a Senior Policy Adviser at the Cabinet Office. He was a Kennedy Scholar at Harvard University.



#### Lord David Willetts

David is the Chair of the British Science Association and the Executive Chair of the Resolution Foundation as well as being a visiting Professor at King's College London. He was Minister for Universities and Science, attending Cabinet, from 2010-2014. He was the Member of Parliament for Havant from 1992-2015. Before that David worked at HM Treasury and the Number 10 Policy Unit. He also served as Paymaster General in the last Conservative Government. David has written widely on economic and social policy. His most recent book 'The Pinch' was published by Atlantic Books.



#### Professor Richard Wiseman

Richard is a Professor of the Public Understanding of Psychology at the University of Hertfordshire but started his working life as a professional magician. He has gained an international reputation for research into unusual areas of psychology, including luck, deception, and the science of self-help. He has written three best-selling popular psychology books and his YouTube videos have been watched over 500 million times.



## About The British Science Association

The British Science Association is a charity, founded in 1831. Our vision is of a world where science is at the heart of society and culture. Our mission is to support, grow and diversify the community of people interested and involved in science; and to strengthen their influence over science's direction and place in society.

We organise major initiatives across the UK, including British Science Week; the annual British Science Festival; regional and local events through our network of branches; the CREST Awards, and other programmes for young people in schools and colleges. We run specific activities and training for professional science communicators; we undertake research and policy work; and we seek to influence and collaborate with stakeholders including policy makers and opinion formers, leaders from across different sectors of business, industry and public life.

## The Department for Business, Energy & Industrial Strategy

The Department for Business, Energy & Industrial Strategy brings together responsibilities for business, industrial strategy, science, innovation, energy, and climate change. It is a ministerial department, supported by 43 agencies and public bodies.

## London & Partners

London & Partners is a not-for-profit public-private partnership, funded by the Mayor of London and our network of commercial partners. They attract overseas businesses, events, congresses, students and visitors to London and help London businesses go global.

## Special thanks

The British Science Association would like to thank Little Dipper, the Evolution Education Trust, Maecer Ltd and Four Communications for their support.

Advisory board:

- › Sir Peter Bazalgette
- › Professor Christopher Bishop
- › Lord Paul Drayson
- › Fiona Fox
- › Professor Dame Wendy Hall
- › Mark Henderson
- › Baroness Martha Lane-Fox
- › Sir Paul Nurse
- › Professor Dame Nancy Rothwell
- › Matthew Taylor FRSA
- › Trevor Williams

# Attendees

**Andrew Bellis**  
Managing Director  
3i

**Jonathan Milner**  
Deputy Chair  
Abcam

**Dr Helen Munn**  
Executive Director  
Academy of Medical Sciences

**Christopher Choa**  
Director  
AECOM

**Howard Covington**  
Chair  
Alan Turing Institute

**Robyn Scott**  
Chief Executive  
Apolitical

**Magnus Renfrew**  
Director, Asia  
Art Basel

**Tim Edwards**  
Executive Chairman  
Atopix Therapeutics

**Tim Levene**  
Founder and Managing Partner  
Augmentum Capital

**Sidd Kharajuria**  
Senior Producer  
Barbican Centre

**Dr Alexander Moscho**  
Chief Executive  
Bayer

**Jonathan Renouf**  
Executive Producer  
BBC

**David Halpern**  
Chief Executive  
Behavioural Insights Team

**Alan Bell**  
Chair  
Bell Integrated Communications

**Anja Langenbacher**  
Director - Europe  
Bill and Melinda Gates Foundation

**Andrew Mace**  
Head, UK Government Relations  
Bill and Melinda Gates Foundation

**Nadine Stech**  
Senior Control Design Engineer  
Blatchford

**Adam Grodecki**  
Consultant  
Boston Consulting Group

**Andrew Mennear**  
Head of UK Government Affairs  
BP

**Dr Robert Sorrell**  
Vice President, Public Partnerships  
BP

**Dr Claire McNulty**  
Director of Science and Research  
British Council

**Keith Ward**  
Chief Executive  
British Medical Association

**Jonathan Bruun**  
Chief Executive  
British Pharmacological Society

**Kasia Morgan**  
Associate  
British Science Association

**Lord David Willetts**  
Chair  
British Science Association

**Katherine Mathieson**  
Chief Executive  
British Science Association

**Louise Ogden**  
Communications Manager  
British Science Association

**Clio Heslop**  
Cultural Partnerships Manager  
British Science Association

**Matt Locke**  
Deputy Chair  
British Science Association

**Preeti Baid**  
Development Manager  
British Science Association

**Giorgio D'Agostaro**  
Development Officer  
British Science Association

**Robbie Macmillan**  
Development Officer  
British Science Association

**Amy MacLaren**  
Director of Development & Communications  
British Science Association

**Rosie Waldron**  
Engagement Manager  
British Science Association

**Steve Whalley**  
Events Manager  
British Science Association

**Jon Fitzmaurice**  
Head of Cultural Development  
British Science Association

**Maria Rossini**  
Head of Education  
British Science Association

**Ivvet Modinou**  
Head of Engagement  
British Science Association

**Beth-Louise Sturdee**  
Marketing Officer  
British Science Association

**Jonathan Loftén**  
Membership Officer  
British Science Association

**Jessica Rowley**  
PR Officer  
British Science Association

**Valia Giannakaki**  
Project Officer  
British Science Association

**Jacob Ohrvik-Stott**  
Project Officer  
British Science Association

<b>Amelia Perry</b> Project Officer British Science Association	<b>Jane Burston</b> Head of Centre Centre for Carbon Measurement National Physical Laboratory	<b>Alan Mak MP</b> MP for Havant Conservative Party	<b>Lauren Myers-Cavanagh</b> Head of Strategic Projects Edelman UK	<b>Stephanie Draper</b> Deputy Chief Executive Forum for the Future	<b>Professor Madeleine Atkins</b> Chief Executive HEFCE	<b>Dr Christian Busch</b> Associate Director Innovation and Co-Creation Lab, London School of Economics	<b>Wouter Witvoet</b> Chief of Staff Karhoo, Inc.
<b>Catriona Sibert</b> Project Officer British Science Association	<b>Ben Rogers</b> Director Centre for London	<b>Harriet Finney</b> Deputy CEO and Director of Policy Creative Industries Federation	<b>Michael Stewart</b> President and Chief Executive Officer, Europe and Cis Edelman UK	<b>Stella Duffy</b> Founder & Co-Director Fun Palaces	<b>Steven Hill</b> Head of Research Policy HEFCE	<b>Dr David Hardman MBE</b> Chief Executive Innovation Birmingham	<b>Deborah Bull</b> Assistant Principal (London) King's College London
<b>Louis Stuppel-Harris</b> Research and Campaigns Manager British Science Association	<b>Baroness Philippa Stroud</b> Chief Executive Centre for Social Justice	<b>Julianne Ponan</b> Chief Executive Creative Nature	<b>Ed Williams</b> UK Chief Executive Edelman UK	<b>Sherry Coutu</b> Chair Founder4Schools	<b>Will Hutton</b> Principal Hertford College	<b>Professor Becky Parker</b> Director Institute for Research in Schools	<b>Gareth Williams</b> Partner KPMG UK
<b>Dr Andy Richards</b> Trustee British Science Association	<b>Saeed Zahedi OBE</b> Technical Director Chas A Blatchford and Sons Ltd	<b>Lord Ajay Kakkar</b> House of Lords Science and Technology Committee Crossbench	<b>Daniel Bentham</b> Head of R & D - Smart Customers EDF Energy	<b>David Rouch</b> Partner Freshfields	<b>Baroness Julia King DBE</b> FREng Crossbench Peer   Vice-Chair of CCC House of Lords   Committee on Climate Change	<b>Dame Uta Frith</b> Emeritus Professor of Cognitive Development University College London	<b>Jerel Whittingham</b> Non-Executive Director Kromek Ltd
<b>Julian Ashworth</b> Director of Group Industry Policy BT Group	<b>Dr Elizabeth Curmi</b> Vice President, Thematic Analyst Citi	<b>Denis Woulfe</b> Partner and Vice Chairman Deloitte	<b>Julia Hobsbawm</b> Founder Editorial Intelligence	<b>Caroline Plumb</b> Co-Founder Freshminds	<b>Björn Savén</b> Chair IK Investment Partners	<b>Dr Suzy Walton</b> Board member Institute of Directors	<b>Liz McInnes MP</b> House of Commons Science and Technology Select Committee member Labour Party
<b>Melanie Lee</b> Chief Scientific Officer BTG	<b>Jacqueline De Rojas</b> Area Vice President, TechUK President Citrix	<b>Amanda Dickins</b> Deputy Director Department for Business, Energy and Industrial Strategy	<b>Alex Wijns</b> Digital Lead Ellen MacArthur Foundation	<b>Chris Osborne</b> Co-Chairman, Europe, Middle East and Africa FTI Consulting	<b>Linda Summerton</b> Chief Executive Immodulon	<b>Lady Barbara Judge</b> Chair Institute of Directors	<b>Baroness Shami Chakrabarti</b> Shadow Attorney General Labour Party
<b>Nazo Moosa</b> Managing Partner C5 Capital	<b>Dame Fiona Woolf</b> Energy Lawyer CMS Cameron McKenna LLP	<b>Sam Jones</b> Principal Science Officer Department for Culture, Media & Sport	<b>Dr Ella Jasmin</b> Ideation Lead Ellen MacArthur Foundation	<b>Almira Cemmell</b> Managing Director FTI Consulting	<b>Paul Hardaker</b> Chief Executive Institute of Physics	<b>William Yule</b> Emeritus Professor of Applied Child Psychology Institute of Psychiatry, Psychology and Neuroscience	<b>Chi Onwurah MP</b> Shadow Minister for Digital Economy Labour Party
<b>Dr Tony Raven</b> Chief Executive Cambridge Enterprise	<b>Stephen Metcalfe MP</b> Chair of House of Commons Science and Technology Select Committee Conservative Party	<b>Dame Sally Davies</b> Chief Medical Officer for England Department for Health	<b>Kresse Wesling</b> Co-Founder and Director Elvis & Kresse	<b>Tamar Kasriel</b> Managing Director Futureal	<b>Noa Gafni</b> Chief Executive and Founder Impact Squared	<b>Eric Yeatman</b> Co-Director, Digital Economy Lab Imperial College London	<b>Christine Losecaat</b> Chief Executive Little Dipper
<b>Sarah Main</b> Director Campaign for Science and Engineering	<b>Baroness Pauline Neville-Jones</b> House Of Lords Science and Technology Committee Conservative Party	<b>Chris Mairs</b> Venture Partner Entrepreneur First	<b>Philip Sheldrake</b> Managing Partner Euler Partners Ltd	<b>Lord Chris Fox</b> Group Communications Director GKN	<b>Eric Yeatman</b> Co-Director, Digital Economy Lab Imperial College London	<b>Dr Ling Ge</b> Executive Officer Imperial College London	<b>Professor Greg Whyte</b> Professor of Applied Sport and Exercise Science Liverpool John Moores University
<b>Holly Harkins</b> Principal Policy Adviser CBI	<b>Earl John Selborne</b> House of Lords Science and Technology Committee Chair Conservative Party	<b>Philip Sheldrake</b> Managing Partner Euler Partners Ltd	<b>Sheila Flavell</b> Chief Operating Officer FDM Group	<b>Mike Warriner</b> Director of Engineering Google	<b>Professor David Nutt</b> The Edmond J Safra Chair in Neuropsycho- pharmacology Imperial College London	<b>Victoria Sant</b> Senior Adviser Investor Forum	<b>Professor Richard Clegg</b> Chief Executive Lloyd's Register Foundation
<b>Nick Axford</b> Global Head of Research CBRE	<b>Rupert Lewis</b> Director Government Office for Science	<b>Chris Mairs</b> Venture Partner Entrepreneur First	<b>Kerina Cheesman</b> Head of Food Integrity and Policy Food and Drink Federation	<b>Sacha Romanovich</b> Chief Executive Grant Thornton LLP UK	<b>Elizabeth Vega</b> Chief Executive Informed Solutions	<b>Tim Hanford</b> Managing Director J.C. Flowers	<b>Dr Trevor Maynard</b> Head of Exposure Management and Reinsurance Lloyd's Lloyds of London
<b>Paul Simpson</b> Chief Executive CDP	<b>The Rt Hon Ed Vaizey MP</b> MP for Didcot and Wantage Conservative Party	<b>David Stringer Lamarre</b> Managing Director   Chairman Fortis Consulting London   IoD City of London	<b>Julie Chappell</b> Partner Hawthorn	<b>John Sauven</b> UK Executive Director Greenpeace	<b>Mohit Joshi</b> Executive Vice-President and Global Head, Financial Services Infosys Ltd	<b>Sandrine Roseberg</b> Executive Search Consultant JCA Group	<b>Dr Julia Shaw</b> Senior Lecturer London South Bank University
<b>Vicky Pryce</b> Chief Economic Adviser CEBR			<b>Peter Florence</b> Director Hay Festival			<b>Rosemary Feenan</b> International Director - Global Research JLL	

<b>Dr Charles Roberts</b> Chief Executive Loxbridge Research	<b>Anu Ojha OBE</b> Director National Space Academy	<b>Dr Norman Lewis</b> Director of Innovation PriceWaterhouseCoopers RAND Corporation	<b>Dr Gill Samuels</b> Member European Advisory Board RAND Corporation	<b>Frank Cordes</b> Partner & Managing Director The Boston Consulting Group	<b>Professor Lesley Yellowlees</b> Professor of Inorganic Electrochemistry, President, Vice-Principal and Head of College of Science and Engineering University of Edinburgh	<b>Jo Barnett</b> Director of Social Enterprise Virgin Money	<b>Viscount Matt Ridley</b> Author and Journalist
<b>Mike Barry</b> Director, Sustainable Business Marks & Spencer Plc	<b>Dr Helen Pearson</b> Chief Magazine Officer Nature	<b>Hilary Reynolds</b> Executive Director Research Councils UK	<b>Carol Monaghan</b> House of Commons Science and Technology Select Committee Member Scottish National Party	<b>Brynjar Agnarsson</b> Managing Director The Carlyle Group	<b>Jane Franses</b> Head of B2B Communications Visa Europe	<b>Jane Franses</b> Head of B2B Communications Visa Europe	<b>Nina Hossain</b> Broadcaster and Journalist
<b>Mark Barnett</b> President UK & Ireland Mastercard	<b>Chris Walton</b> Chair of the Strategy & Innovation Committee NC KazMunayGas	<b>Simon Linnett</b> Executive Vice Chairman Rothschild London	<b>Tracey Brown</b> Managing Director Sense About Science	<b>Kate Hampton</b> Executive Director Climate Change The Children's Investment Fund Foundation	<b>Steve Beaumont OBE</b> Vice Principal for Research & Enterprise University of Glasgow	<b>Peter Read</b> Managing Director Vitruvian Partners	<b>Matt Forde</b> Comedian
<b>Professor Adam Hill</b> Chief Medical Officer McLaren Applied Technologies	<b>Alessandro Magnani</b> Managing Director Neo Capital	<b>Dr Rita Gardner</b> Director Royal Geographical Society	<b>Gemma Young</b> Founder Settled	<b>Alvin Carpio</b> Director The Fourth Group	<b>Professor Richard Wiseman</b> Professor of the Public Understanding of Psychology University of Hertfordshire	<b>Helen Lamprell</b> Corporate and External Affairs Director Vodafone UK	<b>Theo Borgvin Weiss</b> Researcher & Designer
<b>Karen Blackett</b> Chair Media Com	<b>Mark Glover</b> Chief Executive Newington Communications	<b>Shirley Cramer</b> Chief Executive Royal Institute of Public Health	<b>Ian Shott CBE</b> Managing Partner Shott Trinova	<b>Professor Jeremy Watson</b> President The Institution of Engineering and Technology	<b>Professor Brian Cox</b> Professor of Particle Physics University of Manchester	<b>Imran Khan</b> Head of Public Engagement Wellcome Trust	<b>Dr Maggie Aderin- Pocock</b> Space scientist and Science Communicator
<b>Erica Ingham</b> Chief Financial Officer MediaCom North	<b>David Watson</b> Head of Campaigns No 10 Downing Street	<b>Professor Alex Halliday</b> Physical Secretary and Vice-President Royal Society	<b>Claire Jarvis</b> Director of Communications Siemens plc	<b>Dr David Kingham</b> Chief Executive Tokamak Energy Ltd	<b>Professor Dame Kay Davies</b> Director, Medical Research Council Functional Genomics Unit University of Oxford	<b>Alex Russell</b> Director of Communications and Engagement Westway	<b>Vinay Gupta</b> Technologist and Policy Analyst
<b>Bruce Macfarlane</b> Managing Partner MMC Ventures	<b>Ann Wong</b> Director Opportunity Network	<b>Dr Robert Parker</b> Chief Executive Royal Society of Chemistry	<b>Dr James Huckle</b> Clinical Vice President Smith and Nephew	<b>Professor Mark Maslin</b> Professor of Climatology University College London	<b>Professor Sarah Harper</b> Professor of Gerontology University of Oxford	<b>Dr Beth Thompson</b> Senior Policy Advisor Wellcome Trust	<b>Vivienne Parry</b> Writer and Broadcaster
<b>Dr Dick Whittington</b> Director and Chief Strategy Officer Mood International	<b>Debbie McIntosh</b> Head of Subsurface and Wells Practice OTM Consulting	<b>Dr Chris Francis</b> Director for Government Relations Sap (UK) Ltd	<b>Jude Kelly</b> Artistic Director Southbank Centre	<b>Daniel Suskind</b> Lecturer and Author University of Oxford	<b>Sir Nigel Shadbolt</b> Principal of Jesus College University of Oxford	<b>Alex Russell</b> Director of Communications and Engagement Westway	<b>Gill Riches</b> Head of Membership Whitehall & Industry Group
<b>Franck Petitgas</b> Global Co-Head, Investment Banking Morgan Stanley	<b>Sarah Keegan</b> Head of Brand OVO Energy	<b>Sir Colin Blakemore</b> Professor of Neuroscience & Philosophy School of Advanced Study, University of London	<b>Baillie Aaron</b> Founder & Chief Executive Spark Inside	<b>Sir Nigel Shadbolt</b> Principal of Jesus College University of Oxford	<b>Professor Sarah Harper</b> Professor of Gerontology University of Oxford	<b>Sam Gregory</b> Program Director Witness	<b>Rowena Ironside</b> Chair Women on Boards UK Ltd
<b>Susan Watts</b> Head of Public Engagement MRC Clinical Sciences Centre	<b>Dr Gordon Sanghera</b> Chief Executive Oxford Nanopore	<b>Ewen Haldane</b> Business Director School of Life	<b>Andy Betton</b> Finance Director SPARK Venture Management Ltd	<b>Baroness Onora O'Neill</b> Emeritus Professor of Philosophy University of Cambridge	<b>Professor Sarah Harper</b> Professor of Gerontology University of Oxford	<b>Rowena Ironside</b> Chair Women on Boards UK Ltd	<b>Omar Haque</b> Group Strategy Director Worldpay
<b>Jeremy Long</b> Chief Executive - European Business MTR Corporation	<b>Tim McSweeney</b> Partner Restoration Partners	<b>Belinda Phipps</b> Chief Executive Science Council	<b>Tom Teichman</b> Chair   Co-Founder Spark Ventures   The Garage Soho	<b>Sir David Spiegelhalter</b> Professor of the Public Understanding of Risk University of Cambridge	<b>Dame Wendy Hall</b> Professor of Computer Science University of Southampton	<b>Sam Gregory</b> Program Director Witness	<b>Baroness Martha Lane Fox</b> Founder and Executive Chair <a href="http://www.doteveryone.org.uk">www.doteveryone.org.uk</a>
<b>Sharon Ament</b> Director Museum of London	<b>Dr Andrew Bastawrous</b> Co-Founder & CEO   Assistant Professor Peek Vision   London School of Hygiene & Tropical Medicine	<b>Fiona Fox</b> Director Science Media Centre	<b>Edwina Dunn</b> Director Starcount	<b>Professor Joyce Tait</b> Director of the Innogen Centre University of Edinburgh	<b>Vikas Pota</b> Chief Executive Varkey Foundation	<b>Baroness Martha Lane Fox</b> Founder and Executive Chair <a href="http://www.doteveryone.org.uk">www.doteveryone.org.uk</a>	<b>Rosie Allimonos</b> Head of Content Partnerships YouTube/Google
<b>Professor Gillian Leng</b> Deputy Chief Executive National Institute for Health and Care Excellence	<b>Rocco Falconer</b> Founder Planting Promise	<b>Dame Mary Archer</b> Chair of the Board of Trustees Science Museum	<b>Dr Jackie Hunter</b> Chief Executive Stratfield Medical				



British Science Association  
Wellcome Wolfson Building, 165 Queen's Gate  
London SW7 5HD  
T: +44 (0)20 7019 4977  
[www.huxleysummit.org](http://www.huxleysummit.org)